



**SCENIC°ECLIPSE**

THE WORLD'S FIRST DISCOVERY YACHTS™



# Norwegen- Spitzbergen August 2025

- Bergen
- Cruise Bergen-Nordkapp-Svalbard
- Flug Longyearbyen-Oslo
- Oslo



# Themen

Schiff

Route

Bergen (Start)

Oslo (Ziel)

Cruise (Video)

## 1.Schiff: SCENIC ECLIPSE



## Technische Daten

- Stapellauf: 2018
- Länge: 168m
- Breite: 21.5m
- Tiefgang: 5.5m
- Speed: 17 Knoten (31.5km/h)
- Pax: 228 (Polar: 200/190)
- Crew: 176 (Polar: 192)
- Eisklasse: PC6
- Werft: Uljanik (Kroatien)
- Flagge: Nassau (Bahamas)

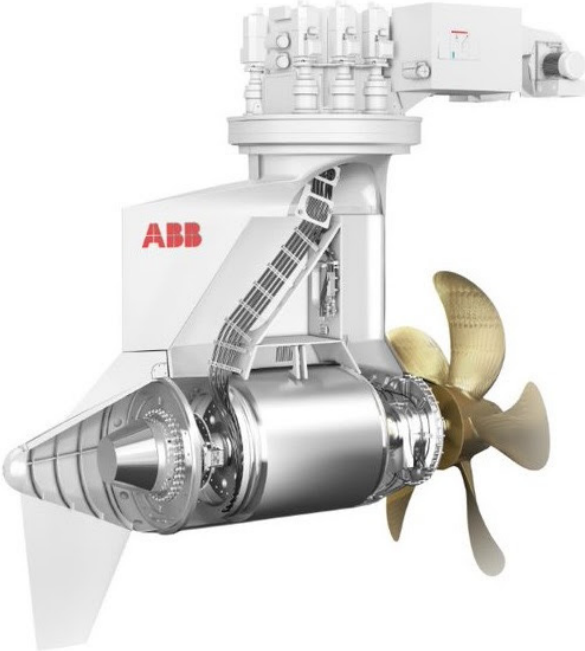


# Ausstattung

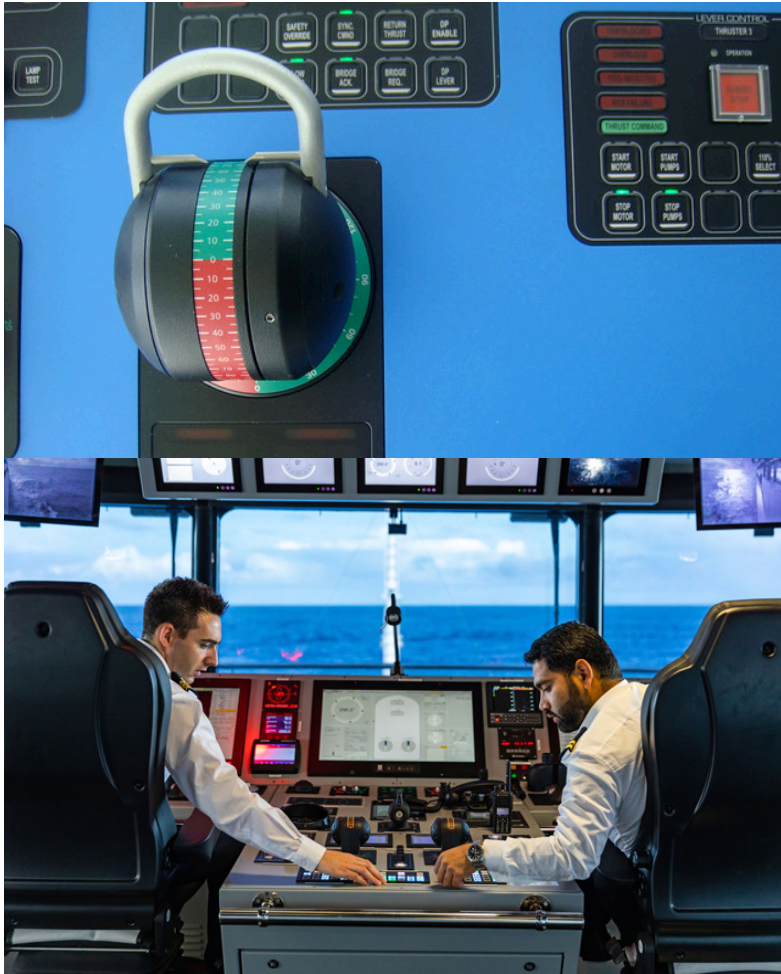
- 2 Propeller-Gondeln (Azipods)
- 2 Bugstrahler (starboard/portside)
- Überdimensionierte Stabilisatoren
- Virtueller Anker (GPS-Positionierung)
- Autopilot (go-home-Funktion)
- Maussteuerung (kein Steuerrad)
- Diesel-elektrischer Antrieb ( 8000 PS)
- 2 Helikopter (Airbus EC 130-E2)
- 1 U-Boot (2 Crew, 6 Pax)
- 10 Zodiacs (1 Crew, 10 Pax)
- 20 Kajaks (1 Crew, 1 Pax)



# Azipod



## Open-Bridge(free access: 24h)







30 %  
60 %  
80 %  
100 %  
100 A  
100 V

Electronic display # 2 disconnected

020V-4000-2

Throttle 2  
Propulsion 02

Home Page



6

141°  
10

JOTRON

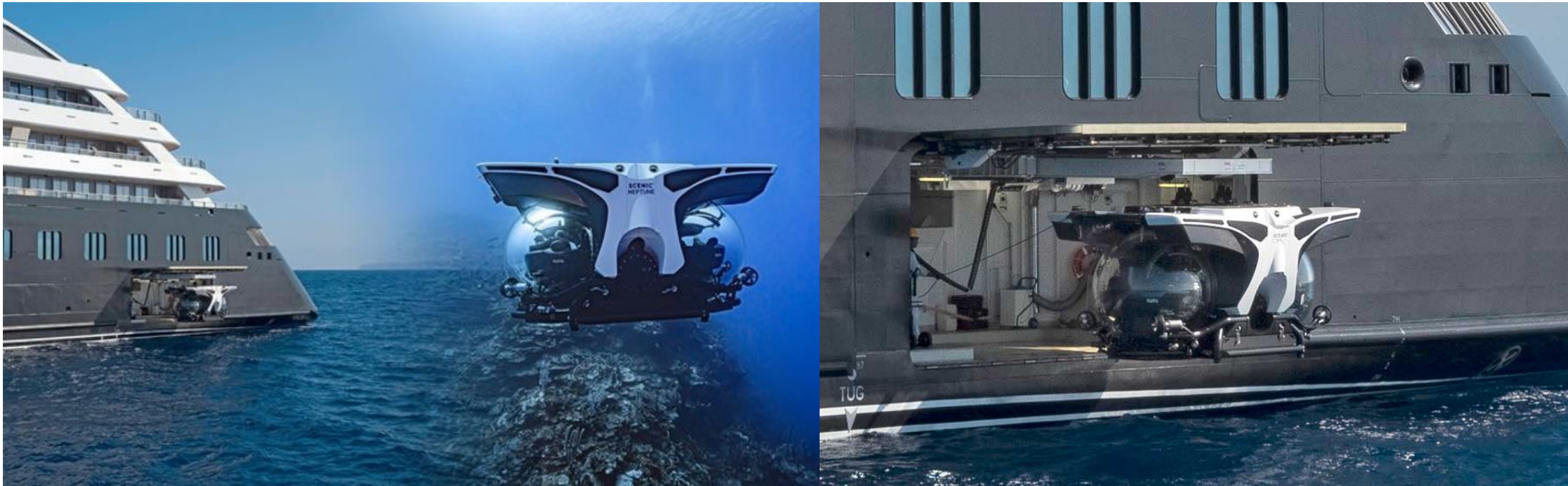
The right side of the dashboard features several electronic displays. At the top is a red digital display showing the number '6'. Below it is a speedometer with a needle pointing to 141 and a digital readout of 10. Further down is a Jotron electronic display showing a circular radar or heading indicator. The dashboard is dark-colored with various buttons and indicators.



*Two Onboard Helicopters*



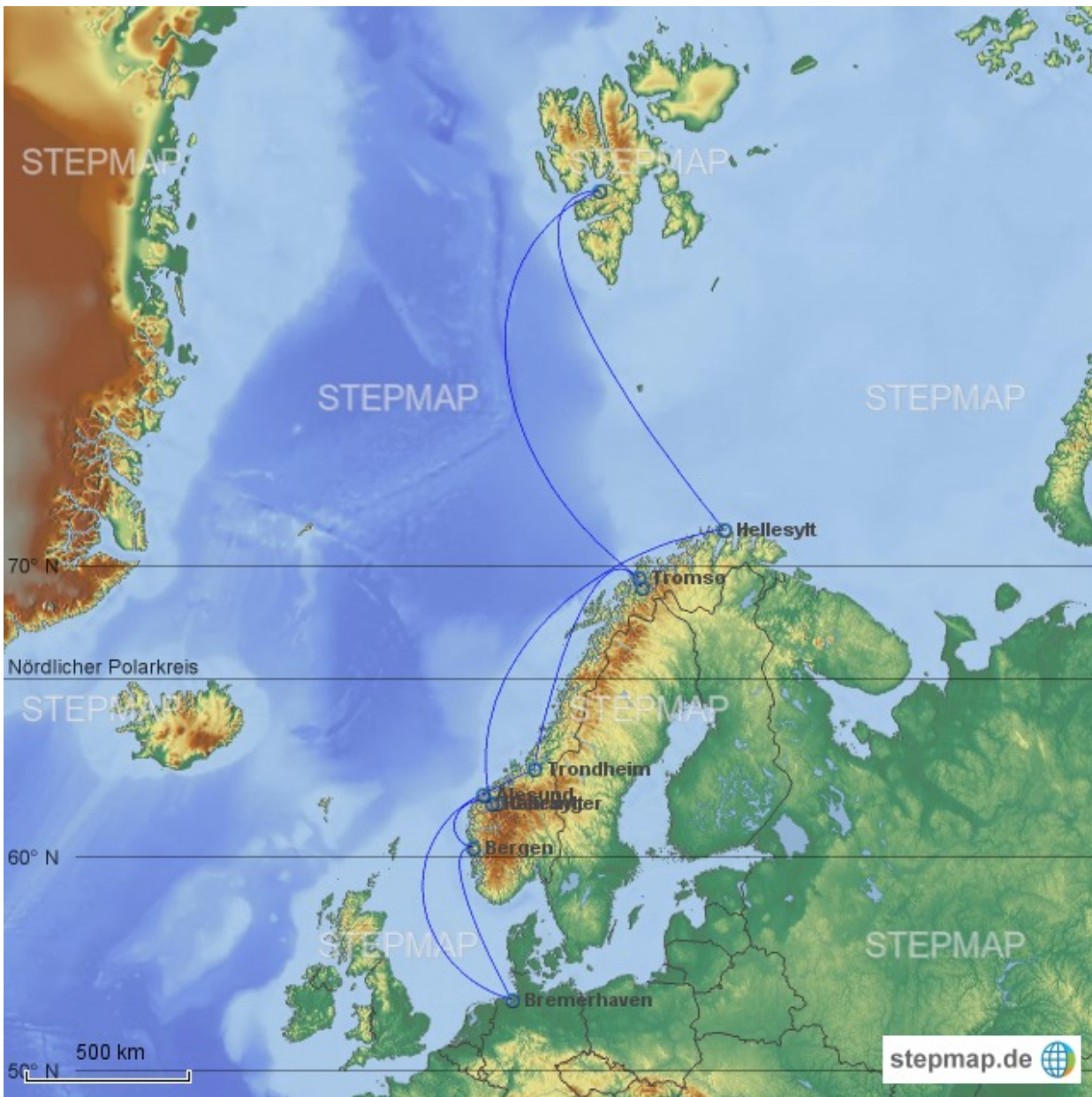
# U-Boot



## 2.Route

- Bergen (Einschiffung)
- Flam (Zugfahrt)
- Geiranger Fjord
- Lofoten
- Tromso
- Nordkapp
- Bear Island
- Svalbard (Spitzbergen)
- Longyearbyen
- Oslo (Flug)





## Spitzbergen / Svalbard

Fläche: 61` 000 qkm

Schweiz: 41` 000 qkm

Einwohner total: 2` 500

Eisbären: 3` 000

Snowmobiles: 3` 500



## Distanzen zum Nordpol:

- Spitzbergen 1` 000km
- Nordkap 2` 000km
- Polarkreis 2` 500km
- Bergen 3` 500km
- Schweiz 5` 000km



3. Bergen

300`000 Einwohner  
(Bern 150`000)











## 4. Oslo

725`000 Einwohner

(Zürich: 450`000)

Bruttosozialprodukt  
(kaufkraftbereinigt):

N: 100`000 USD/Kopf

(CH: 93`000 USD/Kopf)



















